

Slip-On Line (Titanium)

Product code: **M-BM/T/4H**

In a way, the BMW 1 Series M Coupé is a throwback to the past. This twin turbo, 335+ horsepower coupe reminds many BMW diehards of the early M cars, in which light weight, small size, and agile handling were the only things that counted. Do we dare to improve on such a focused, purpose-built machine? Yes, we do.

At Akrapovič we've developed several different configurations to suit all tuning applications. The basis of all the configurations is our Titanium Slip-On system. Utilizing a single muffler arrangement, the Slip-On is designed to be modular. In its basic mode, all exhaust gases flow through the main body of the muffler, giving you a deeper rumble of an exhaust note compared to stock without any drone. In Europe this system meets TÜV standards for noise. However, the muffler system is built in such a way that by replacing a blocking plate with our Wireless Kit valve system the driver is able to noticeably increase the volume of the exhaust at the press of a button. Once activated, the majority of the exhaust gases route through the muffler bypass outlets.

To cap off any of the systems, we offer either carbon fiber or titanium exhaust tips. Both versions feature a spherical mounting system to allow for perfect alignment of all four tips. The carbon fiber tips

are constructed at our in-house production facility using “prepreg” cloth that is vacuum-bagged and autoclaved. The result is an attractive yet extremely durable part.

The system reduces backpressure and is an excellent starting point for further engine tuning or turbo modifications. Even when installed on an otherwise stock vehicle a gain of 5 horsepower and 5 Nm / 3 lbs-ft of torque are achieved. Furthermore, a weight reduction is realized.

The technical descriptions of Akrapovič exhaust systems and similar products are subject to changes without prior notification. Images and illustrations may differ. Subject to technical alterations. We are not responsible for the accuracy of the technical data.

TECHNICAL DATA	UNIT	STOCK	AKRAPOVIČ	DIFFERENCE
maximum power	kW	266 at 5650 rpm	269 at 5650 rpm	+ 3.5 at 5670 rpm
	HP (m)	361.7 at 5650 rpm	365.8 at 5650 rpm	+ 4.8 at 5670 rpm
	HP (i)	356.8 at 5650 rpm	360.8 at 5650 rpm	+ 4.7 at 5670 rpm
maximum torque	Nm	542.6 at 2950 rpm	544.3 at 3050 rpm	+ 4.6 at 3100 rpm
	lb-ft	400.2 at 5650 rpm	198.4 at 5650 rpm	+ 2.6 at 5670 rpm
weight	kg	11.9	10.7	- 1.2
	lb	26.2	26.2	- 2.6
static noise level	dB	81	81	0
	rpm	3750	3750	0

measured with: BMW 1 Series M Coupé (E82) 2011

Mandatory Parts

Product name: **Tail pipe set (Carbon)**
 Product code: **TP-CT/5**

Product name: **Tail pipe set (Titanium)**
 Product code: **TP-T/S/4**

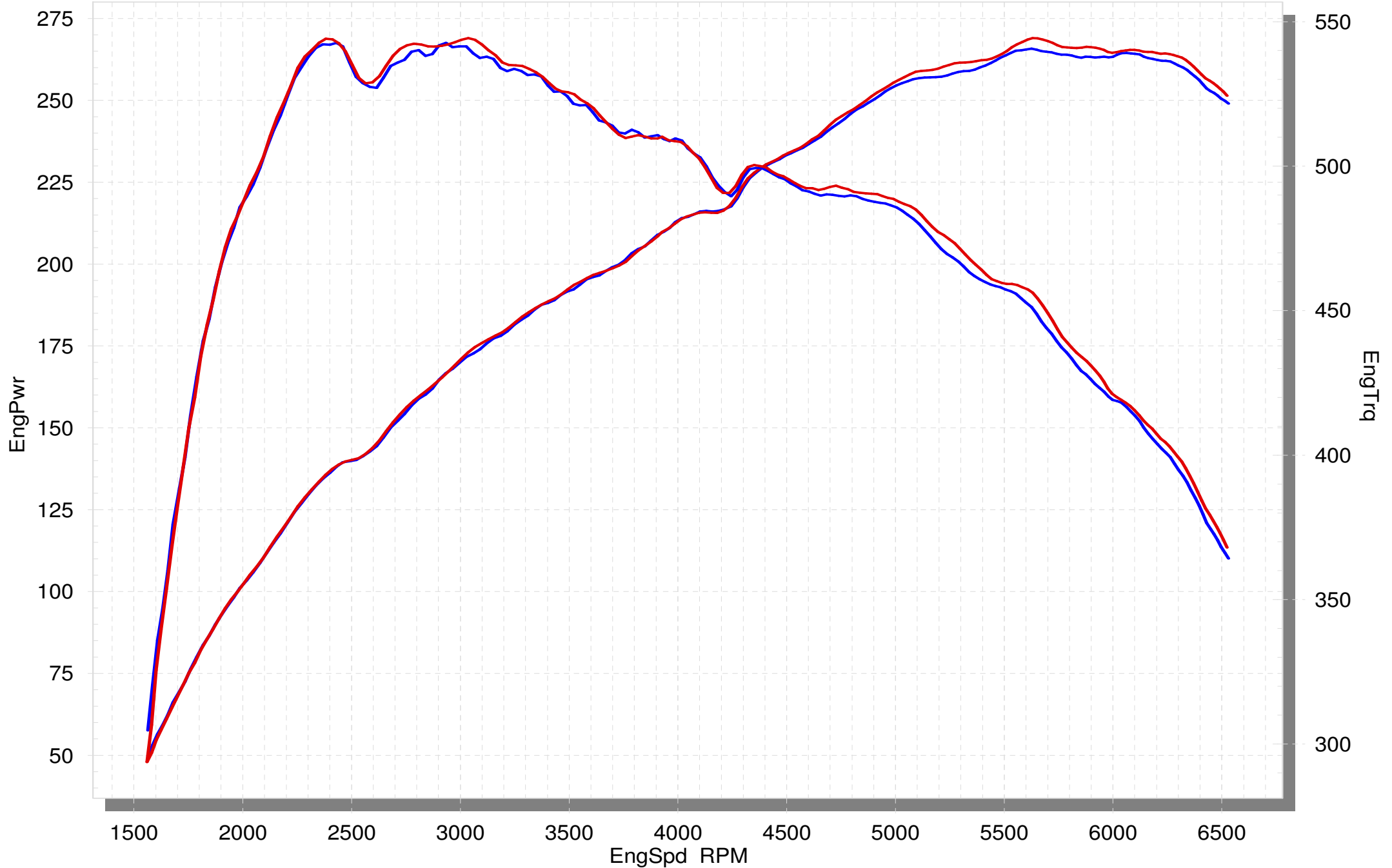
Optional Parts

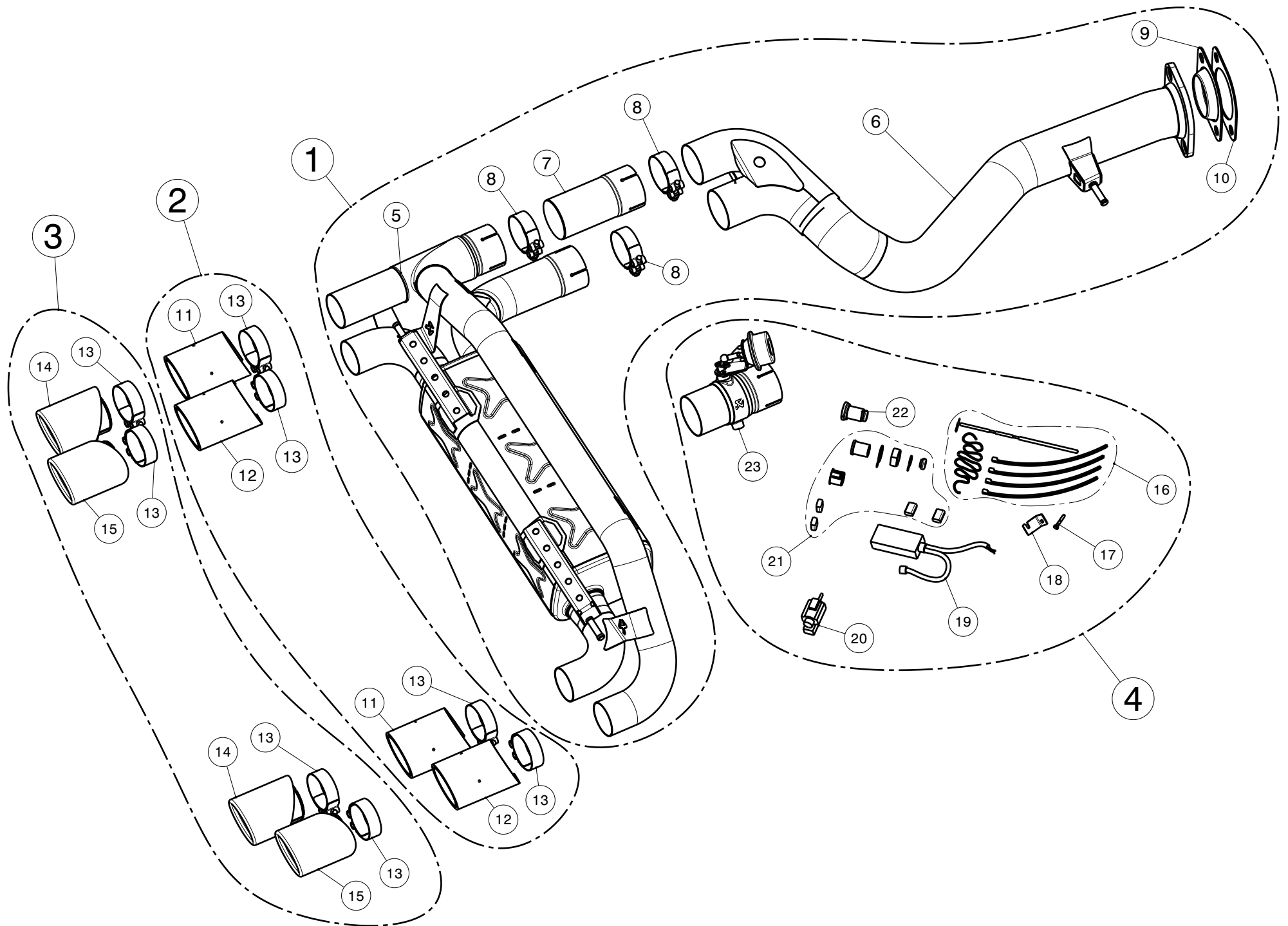
Product name: **Wireless Kit**
 Product code: **P-HF597**

BMW 1 Series M Coupe

ORIGINAL

AKRAPOVIC SLIP-ON





No.	SALES CODE	DESCRIPTION	QTY.
1	M-BM/T/4H	M BMW 1M HSO 11 set MTT	1
2	TP-CT/5	TP CA set BMW 1M HSO,E 11	1
3	TP-T/S/4	TP TI set BMW 1M HSO,E 11	1
4	P-HF597	motažni set BMW 1M WIRELESS opc.	1
5	M-BM/T/5H	M BMW 1M TI AN 2×D70/4×D60	1
6	LP-BM1M	LP TI D82/2×D70 CO BMW 1M SO 11	1
7	P-HF620	cev TI D70/72,4×153,2 zapora BMW 1M 11	1
8	P-R69	objemka SS TORCA Accuseal D73	3
9	P-F57	prirob. SS D69,1/104 BMW 1M sest.	1
10	P-G49	tesnilo grafit 157×118/D87 BMW 1M 11 G49	1
11	TP-CT/5/L	TP CA D85/62×145 Lzun./Dnot. BMW 1M11	2
12	TP-CT/5/R	TP CA D85/62×145 Dzun./Lnot. BMW 1M11	2
13	P-R64	objemka SS D64/67×21 M8×45	4
14	TP-T/S/4/L	TP TI D85/62×115 Lzun./Dnot. BMW 1M11	2
15	TP-T/S/4/R	TP TI D85/62×115 Dzun./Lnot. BMW 1M11	2
16	P-HF612	montažni set BMW 1M WIRELES	1
17	P-FB43	vijak šest. prirob FE M6×16 SC UN5951	1
18	P-X90	nosi. SS 1,2×50×19 N1682+gesipa M6	1
19	P-HF614	montažni set BMW 1M WIRELES transm.	1
20	P-HF452	šmontažni set PO 997C 08 WIRELESel.vent.	1
21	P-HF450	montažni set PO 997C 08 WIRELES stik set	1
22	P-HF455	montažni set PO 997C 08 WIRELES stikalo	1
23	P-HF621	cev EXUP aktuator TI D70/72,4×152 1M	1